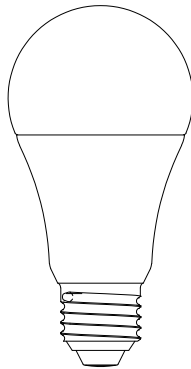




User Manual

Smart Bulb

Version: 1.0



Important Note

1. Please make sure the device is connected to the power and your phone is connected with Wi-Fi.
2. Routers: If the router is a dual-band router, please select a 2.4GHz network to add the device. You also need to enable the router broadcasting function.
3. Wireless Router: Set the encryption method as WPA2-PSK and authorization type as AES or set both as **Auto**. Please name the Wi-Fi router in English. To achieve better connectivity, please keep the device and router within a certain distance.
4. Check whether the devices connected to the router have achieved the maximum number. If so, please try to turn off the Wi-Fi connection of some devices.
5. Make sure the router wireless MAC filtering function is enabled.
6. Remove the device from the filter and make sure that the router is not prohibiting the device from the connection.
7. Make sure the entered password is correct when adding a new device.

Due to regular upgrades of systems and products, NGTeco could not guarantee exact consistency between the actual product and the written information in this manual.

Overview

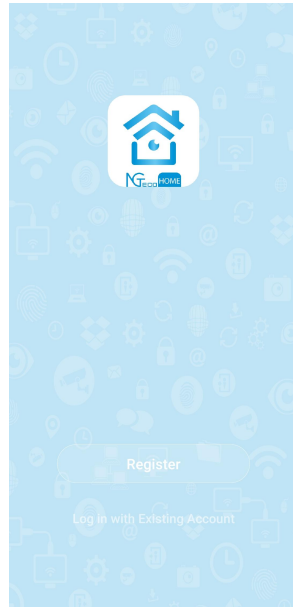
Smart Bulb not only decorate our home but are also environment friendly. They're specifically designed to increase our body's melatonin production and create a soothing atmosphere which resultantly boosts your productivity. And yes, not to forget one of the biggest advantages of using smart lights, you can control them right from your smartphone no matter where you are.

How to connect Smart Bulb to NGTeco Home?

Step 1: Account Registration

Search the **NGTeco HOME** App in Apple App Store or Google Play Store and download the App to your mobile phone /Tablet.

Open the **NGTeco HOME** App and log in with your account. If you do not have an account, create an account with your phone number or Email ID.



Step 2: Power on the Bulb

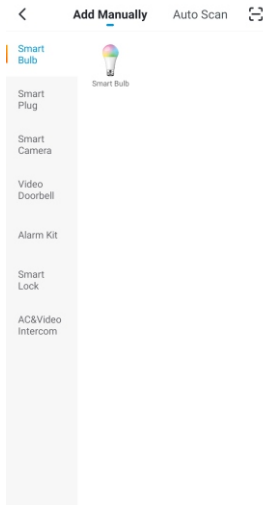
Fix the bulb into the lamp base. Wait for a few seconds until the light blink rapidly.

Note:

1. The default pairing mode is EZ Mode. If the light blinks slowly, turn the light on and off three times to make the light blink rapidly.
2. If you want to use other Net Pairing Mode, please switch to the mode and follow the on-screen instructions.

Step 3: Add the Bulb to the App

Tap the “+” button on the top right corner of the interface, and then select the “**Smart Bulb**” option. Choose the “**Confirm bulb rapidly blink**” button on the next interface.



Step 4: Add the Wi-Fi Details

Enter the Wi-Fi name and Password. Then tap the “**Confirm**” button. The App will search and connect the smart bulb automatically.

Note: The bulb only works on 2.4GHz Wi-Fi networks.

Step 5: Finish the Setup

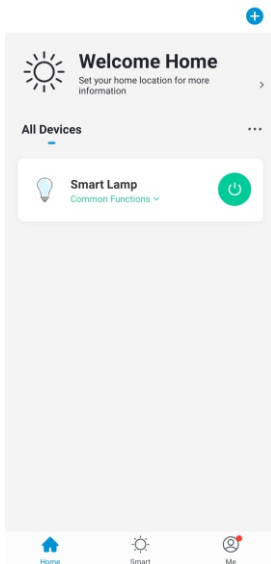
Once you see the message “**Device added successfully**” on the mobile App, tap the “**Done**” button to complete the setup. You can edit the name of this smart bulb manually.

Smart Bulb Control

After you successfully set up your smart bulb, you can view and manage the added devices on the Home screen of the **NGTeco Home** App. Tap a smart bulb to control and manage it.

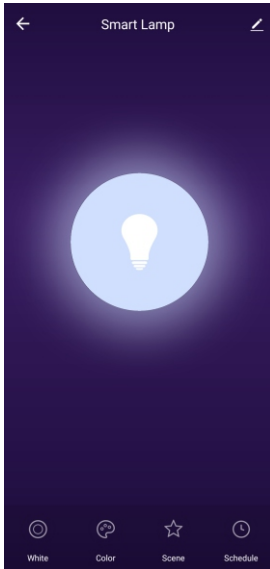
Home Screen

In the Home screen page, you can manage all the devices that have been added to the NGTeco App.



Smart Bulb Interface

It is very convenient to use such that you can Turn On/Off the smart bulb on a click. It is also easy to customize the smart bulb with options such as White, Color, Scene and Schedule as shown below:

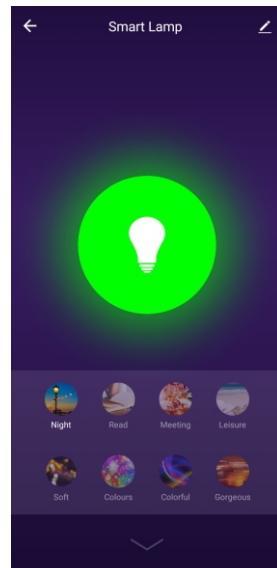
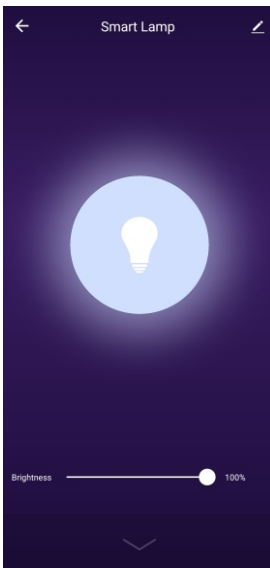


White Mode

On this interface, you can create a schedule up for the smart bulb to turn On/Off.

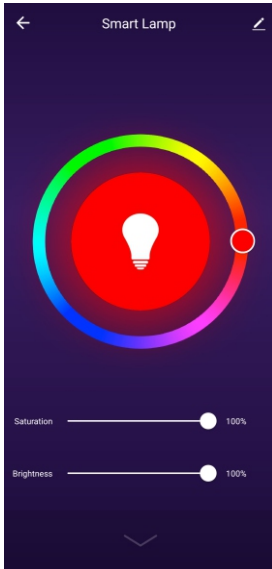
Scene Mode

On this interface, you can create a random schedule for the smart bulb to turn On/Off.



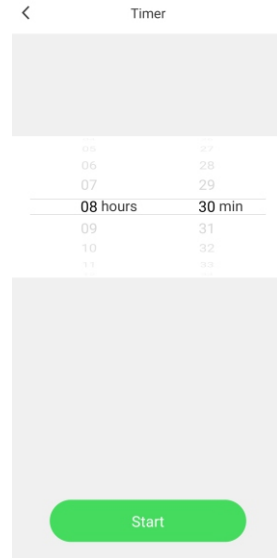
Color Mode

On this interface, you can set a timer for the smart bulb to define the turn On/Off time duration.




Schedule Mode

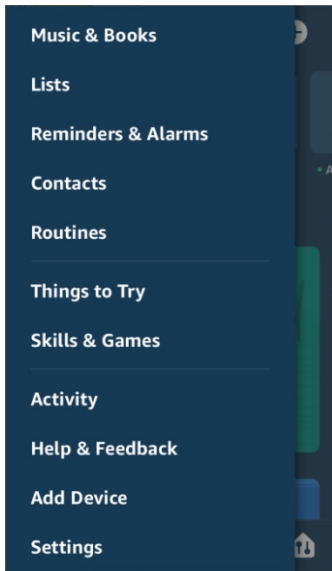
On this interface, you can create a periodic schedule for the smart bulb to turn On/Off.



How to connect the Smart Bulb to Amazon Alexa?

Step 1: Sign in to Alexa Account

Open the **Alexa** App and sign in to your account. In the upper left corner of the Home page, click the menu  button to view the App menu and then select "**Skills & Games**".



Step 2: Search NGTeco Home

Type in **NGTeco Home** in the search bar and then click the **Search** button.

Step 3: Link NGTeco Home App

Enable the **NGTeco Home** App in the Skills and Games section. Then sign in your **NGTeco Home** account to complete the account linking process.

Note: After the account is linked successfully, you can ask Alexa to discover the devices. Alexa will show all the discovered devices after 20 seconds.

Step 4: Back to Menu

Click **☰** to go back to the menu and then click the "**Smart Home**" button.

Control Smart Plug By Echo

In the **NGTeco Home** page, you could group your devices into different categories. After your **NGTeco Home** App has been linked with Alexa, you can command the Echo, as given below:


- Echo, turn On/Off the bedroom blub.
- Echo, set the bedroom blub brightness to 50 percent.
- Echo, brighten/dim the bedroom blub.
- Echo, set the bedroom blub color to green.

How to connect Smart Bulb to Google Home?

Step 1: Launch the Google Home App

Launch the **Google Home** App and make sure the **Google Home** speaker is installed. If not, please follow the **Google Home** Speaker installation instructions to complete the installation process.

Step 2: Menu

Once the **Google Home** is installed, click the  button on the top left corner of the interface to view the menu. Then click "**Home Control**" in the menu.

Step 3: Add NGTeco Home

On the "**Add device**" page, scroll down to find "**NGTeco Home**" and then click it. Sign in to the **NGTeco Home** App with your account and password.

Note: Select the **NGTeco Home** App in the drop-down menu to complete the account linking.

Step 4: Link Account

After successful account linking, you can see all the configured smart devices in **Google Home** App from your **NGTeco Home** App account. You can assign rooms for each device.

Note: Now you can use **Google Home** to control your smart devices, and you can command as given below:

- OK Google, turn On/Off the wall bulb.
- OK Google, set the bedroom bulb color to red.



Warning:

This device complies with Part 15 of the FCC Rules. Operation is subject to the following two conditions: (1) This device may not cause harmful interference, and (2) this device must accept any interference received, including interference that may cause undesired operation.

This equipment has been tested and found to comply with the limits for a Class B digital device, pursuant to Part 15 of the FCC Rules. These limits are designed to provide reasonable protection against harmful interference in a residential installation. This equipment generates, uses, and can radiate radio frequency energy and, if not installed and used in accordance with the instructions, may cause harmful interference to radio communications. However, there is no guarantee that interference will not occur in a particular installation. If this equipment does cause harmful interference to radio or television reception, which can be determined by turning the equipment off and on, the user is encouraged to try to correct the interference by one or more of the following measures:

- Reorient or relocate the receiving antenna.
- Increase the separation between the equipment and receiver.
- Connect the equipment into an outlet on a circuit different from that to which the receiver is connected.
- Consult the dealer or an experienced radio/TV technician for help.

IMPORTANT! Any changes or modifications not expressly approved by the party responsible for compliance could void the user's authority to operate the equipment.

1600 Union Hill Road, Alpharetta, GA 30005
Tel: 770-800-2321(US)
www.ngteco.com

